



Paper Type: Original Article

Multi-Criteria Decision-Making Model for Rank Strategy to Overcome Barriers to Integrating the AI and Cloud Systems in the IT Industry

Ahmed Abdelhafeez^{1,*} , Alber Shawky Aziz¹

¹ Faculty of Information Systems and Computer Science, October 6th University, Cairo, Egypt; aahafeez.scis@o6u.edu.eg; albershawky.scis@o6u.edu.eg.

Citation:

Received: 04 March 2023

Revised: Jun 2023

Accepted: 21/12/2023

Abdelhafeez, A., & Aziz, A. S. (2024). Multi-criteria decision-making model for rank strategy to overcome barriers to integrating the AI and cloud systems in the IT industry. *Soft computing fusion with applications*, 1 (1), 1-9.


Abstract

This study proposed a decision-making framework for identifying key barriers when implementing Artificial Intelligence (AI) and cloud systems in the Information Technology (IT) industry. Then, it proposed a set of strategies to overcome these barriers. We proposed a Multi-Criteria Decision-Making (MCDM) methodology for various criteria. Multiple barriers, such as cost, technology, environment, and digitization, should be analyzed. The Evaluation Based on Distance from Average Solution (EDAS) method is an MCDM method used to rank the alternatives. The criteria weights are computed by the average method. This study used ten barriers and ten strategies. The results show that technological barriers have the highest importance in this study. The sensitivity analysis is conducted to show the stability rank of alternatives. There are eleven cases in which criteria weights are proposed. Then, the EDAS method is used to rank the other options. The results show the stability of the rank under different cases.


Keywords: Artificial intelligence, Cloud systems, IT industry, Barriers, Multi-criteria decision making, Strategy.

1 | Introduction

Most businesses depend entirely on Cloud Computing (CC) and Artificial Intelligence (AI) technologies to safeguard and manage resources. Since every company owner wants to automate their activities, the need for CC and AI technologies has increased dramatically. Advanced technology-equipped organizations provide great flexibility and scalability while being relatively easy to administer. With time, people started interacting

 Corresponding Author: aahafeez.scis@o6u.edu.eg



 Licensee System Analytics. This article is an open access article distributed under the terms and conditions of the Creative Commons Attribution (CC BY) license (<http://creativecommons.org/licenses/by/4.0>).

with different technologies increasingly, becoming dependent on new developments. The CC industry is growing daily to achieve automated procedures that aid in improving operations, saving expenses, and accelerating corporate development [1], [2].

According to current predictions, the worldwide public CC industry is expected to rise at a Compound Annual Growth Rate (CAGR). According to Shift research, eighty-one percent of businesses use cloud infrastructure, which is expected to increase in the coming years. This circumstance makes it evident that to compete in today's market, most organizations are becoming digital and introducing cutting-edge CC technology. Information Technology (IT) is thus essential for efficiently arranging corporate structures and developing future market strategies [3], [4].

With the invention of novel innovations and the rising demand for digital services, the IT industry has seen tremendous growth in recent years. The industry is expected to expand as technology becomes more pervasive in our everyday lives. Therefore, it is essential that the business closely monitors the factors impacting the cloud system [5], [6].

Multi-Criteria Decision-Making (MCDM) techniques are simple but dependable instruments for deciding intricate and multifaceted real-world issues [7], [8]. Using MCDM techniques, decision-makers may compare and contrast several options based on endless criteria, then choose the option that receives the most incredible score while considering the requirements. Generally speaking, the development of MCDM techniques aims to tackle two critical difficulties in decision-making [9], [10]: 1) determining the significance of the choice criteria, and 2) ranking or prioritizing a set of options about the requirements. A significant development in management science and related subjects has been the development of MCDM techniques [11]-[14].

The main contribution of this study:

1. Identify the critical barriers of AI and cloud systems in implementation with IT industry systems.
2. Identify the critical strategies for overcoming these barriers.
3. We developed an MCDM methodology named the Evaluation Based on Distance from Average Solution (EDAS) method to rank the alternatives.

2 | EDAS Method

The EDAS method is an MCDM methodology used to run the alternatives from various options. This study used this method to rank the key strategy to overcome the barriers to implementing AI and cloud systems in the IT industry [15]-[18]. *Fig. 1* shows the steps of the EDAS MCDM method.

Phase 1. Build the decision matrix.

The decision matrix is built between a set of criteria in the key barriers and a set of strategies to overcome the barriers to implementing AI and cloud systems in the IT industry.

$$A = \begin{bmatrix} a_{11} & \cdots & a_{1n} \\ \vdots & \ddots & \vdots \\ a_{m1} & \cdots & a_{mn} \end{bmatrix}_{m \times n} \quad i = 1, 2, \dots, m; j = 1, 2, \dots, n. \quad (1)$$

Phase 2. Compute the average solution.

The average solution is computed as:

$$V_j = \frac{\sum_{i=1}^m a_{ij}}{m}. \quad (2)$$

Phase 3. Compute the positive and negative distance.

The positive and negative distances from every alternative are computed for each beneficial and non-beneficial criterion as:

$$P_{ij} = \frac{\max(0, (a_{ij} - V_j))}{V_j}. \quad (3)$$

$$P_{ij} = \frac{\max(0, (V_j - a_{ij}))}{V_j}. \quad (4)$$

$$N_{ij} = \frac{\max(0, (V_j - a_{ij}))}{V_j}. \quad (5)$$

$$N_{ij} = \frac{\max(0, (a_{ij} - V_j))}{V_j}. \quad (6)$$

Phase 4. Compute the criteria weights.

Phase 5. Compute the weighted P_{ij} and N_{ij} .

The weighted positive and negative distance are computed as:

$$WP_i = \sum_{j=1}^n P_{ij} \cdot w_j. \quad (7)$$

$$WN_i = \sum_{j=1}^n N_{ij} \cdot w_j. \quad (8)$$

Phase 6. Compute the weighted normalized P_i and N_i .

$$CWP_i = \frac{WP_i}{\max_i(WP_i)}. \quad (9)$$

$$CWN_i = \frac{WN_i}{\max_i(WN_i)}. \quad (10)$$

Phase 7. Compute the appraisal score.

$$S_i = \frac{1}{2} (CWP_i + CWN_i). \quad (11)$$

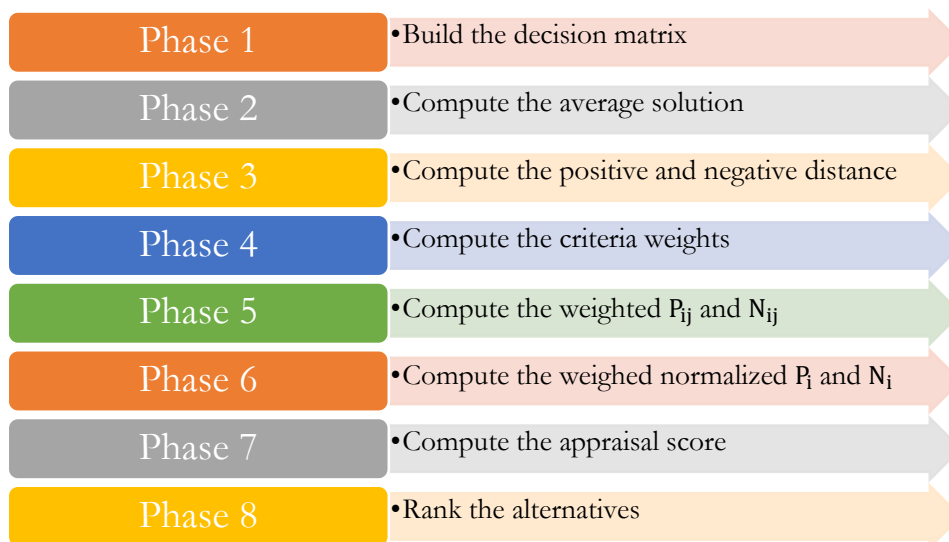


Fig. 1. The steps of the EDAS method.

3 | Application

This section introduces the results of the EDAS method for identifying key strategies of the key barrier in implementing AI and cloud systems in the IT industry. This study uses ten key barriers, as shown in Fig. 2.

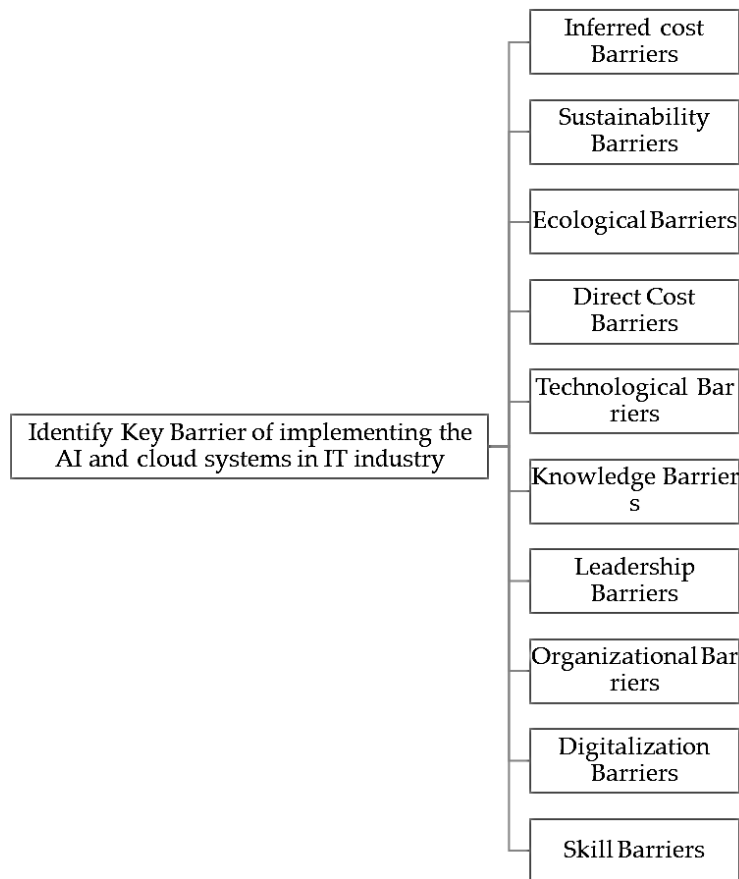


Fig. 2. The key barrier to implementing AI and cloud systems in the It industry.

Phase 1. Build the decision matrix.

The decision matrix is built between a set of criteria in the key barriers and a set of strategies to overcome the barriers to implementing AI and cloud systems in the IT industry. The decision matrix is built by using Eq. (1).

Phase 2. Compute the average solution.

The average solution is computed by using Eq. (2).

Phase 3. Compute the positive and negative distance by using Eqs. (3)-(6). The cost criterion is negative.

The positive and negative distances from every alternative are computed for each beneficial and non-beneficial criterion, as shown in Tables 1 and 2.

Table 1. The positive distance.

	KBC ₁	KBC ₂	KBC ₃	KBC ₄	KBC ₅	KBC ₆	KBC ₇	KBC ₈	KBC ₉	KBC ₁₀
KBA ₁	0	0.117647	0.21875	0	0	0	0	0	0.2	0.21875
KBA ₂	0.137931	0	0	0.027778	0.365079	0.152542	0	0.433962	0.6	0.21875
KBA ₃	0	0.264706	0.0625	0.305556	0.365079	0.661017	0.387755	0	0	0
KBA ₄	0	0.411765	0.21875	0.166667	0	0	0.183673	0	0.2	0
KBA ₅	0	0	0.375	0	0	0	0	0	0.6	0
KBA ₆	0.310345	0	0	0.027778	0.206349	0	0	0.056604	0.4	0
KBA ₇	0	0	0	0.027778	0	0	0.183673	0.622642	0	0
KBA ₈	0.137931	0.264706	0	0	0.047619	0.152542	0.183673	0	0	0.375
KBA ₉	0.655172	0.117647	0	0	0	0.152542	0.183673	0.433962	0	0.21875
KBA ₁₀	0.310345	0	0.21875	0.166667	0.52381	0.661017	0	0.245283	0	0.0625

Table 2. The negative distance.

	KBC ₁	KBC ₂	KBC ₃	KBC ₄	KBC ₅	KBC ₆	KBC ₇	KBC ₈	KBC ₉	KBC ₁₀
KBA ₁	0.37931	0	0	0.111111	0.111111	0.525424	0.632653	0.320755	0	0
KBA ₂	0	0.323529	0.25	0	0	0	0.22449	0	0	0
KBA ₃	0.034483	0	0	0	0	0	0	0.132075	0	0.09375
KBA ₄	0.551724	0	0	0	0.428571	0.355932	0	0.698113	0	0.25
KBA ₅	0.37931	0.029412	0	0.111111	0.428571	0.355932	0.22449	0.509434	0	0.40625
KBA ₆	0	0.323529	0.09375	0	0	0.016949	0.020408	0	0	0.25
KBA ₇	0.206897	0.176471	0.25	0	0.269841	0.525424	0	0	0.2	0.09375
KBA ₈	0	0	0.25	0.25	0	0	0	0.132075	0.8	0
KBA ₉	0	0	0.25	0.25	0.269841	0	0	0	0.6	0
KBA ₁₀	0	0.323529	0	0	0	0	0.020408	0	0.4	0

Phase 4. Compute the criteria weights as shown in Fig. 3. The technological barriers have the highest weight.

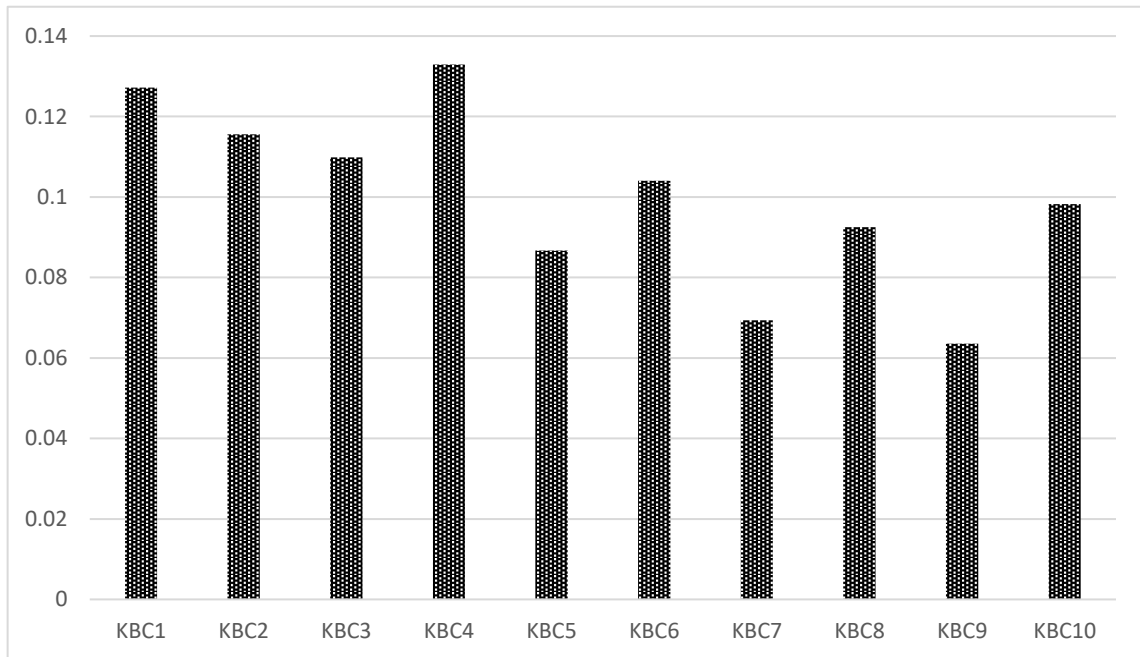


Fig. 3. The key barrier weights.

Phase 5. Compute the weighted P_{ij} and N_{ij} .

The weighted positive and negative distances are computed using Eq. (7) and Eq. (8), as shown in Tables 3 and 4.

Table 3. Weighted positive distance.

	KBC ₁	KBC ₂	KBC ₃	KBC ₄	KBC ₅	KBC ₆	KBC ₇	KBC ₈	KBC ₉	KBC ₁₀
KBA ₁	0	0.013601	0.024025	0	0	0	0	0	0.012717	0.021496
KBA ₂	0.01754	0	0	0.003693	0.031654	0.015871	0	0.040135	0.03815	0.021496
KBA ₃	0	0.030602	0.006864	0.040623	0.031654	0.068776	0.026896	0	0	0
KBA ₄	0	0.047603	0.024025	0.022158	0	0	0.01274	0	0.012717	0
KBA ₅	0	0	0.041185	0	0	0	0	0	0.03815	0
KBA ₆	0.039466	0	0	0.003693	0.017892	0	0	0.005235	0.025434	0
KBA ₇	0	0	0	0.003693	0	0	0.01274	0.057585	0	0
KBA ₈	0.01754	0.030602	0	0	0.004129	0.015871	0.01274	0	0	0.03685
KBA ₉	0.083317	0.013601	0	0	0	0.015871	0.01274	0.040135	0	0.021496
KBA ₁₀	0.039466	0	0.024025	0.022158	0.045417	0.068776	0	0.022685	0	0.006142

Table 4. Weighted negative distance.

	KBC ₁	KBC ₂	KBC ₃	KBC ₄	KBC ₅	KBC ₆	KBC ₇	KBC ₈	KBC ₉	KBC ₁₀
KBA ₁	0.048236	0	0	0.014772	0.009634	0.054668	0.043883	0.029665	0	0
KBA ₂	0	0.037402	0.027457	0	0	0	0.015572	0	0	0
KBA ₃	0.004385	0	0	0	0	0	0	0.012215	0	0.009212
KBA ₄	0.070161	0	0	0	0.037159	0.037033	0	0.064565	0	0.024566
KBA ₅	0.048236	0.0034	0	0.014772	0.037159	0.037033	0.015572	0.047115	0	0.039921
KBA ₆	0	0.037402	0.010296	0	0	0.001763	0.001416	0	0	0.024566
KBA ₇	0.026311	0.020401	0.027457	0	0.023397	0.054668	0	0	0.012717	0.009212
KBA ₈	0	0	0.027457	0.033237	0	0	0	0.012215	0.050867	0
KBA ₉	0	0	0.027457	0.033237	0.023397	0	0	0	0.03815	0
KBA ₁₀	0	0.037402	0	0	0	0	0.001416	0	0.025434	0

Phase 6. Compute the weighted normalized P_i and N_i by using Eq. (9) and Eq. (10).

Phase 7. Compute the appraisal score using Eq. (11), as shown in Fig. 4. Alternative 4 is the best, and alternative 6 is the worst.

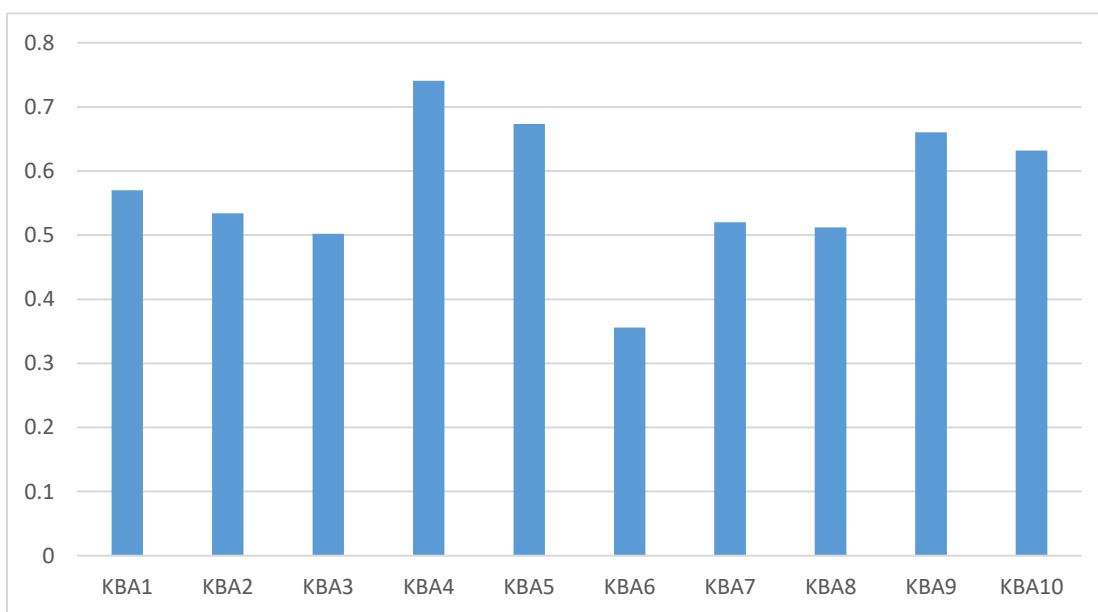


Fig. 4. The appraisal score.

4 | Sensitivity Analysis

This study changes the criteria weights under different cases to show the rank of alternatives under different cases. We proposed 11 cases in criteria weights. In the first case, we put all criteria in equal weight. In the second case, we put one criterion with 0.12 weight; the other criteria are equal, as shown in Fig. 5. Then, we used the EDAS method to rank the alternatives under different cases. Fig. 6 shows the appraisal score under different cases. The results show the rank is stable, as shown in Fig. 7.

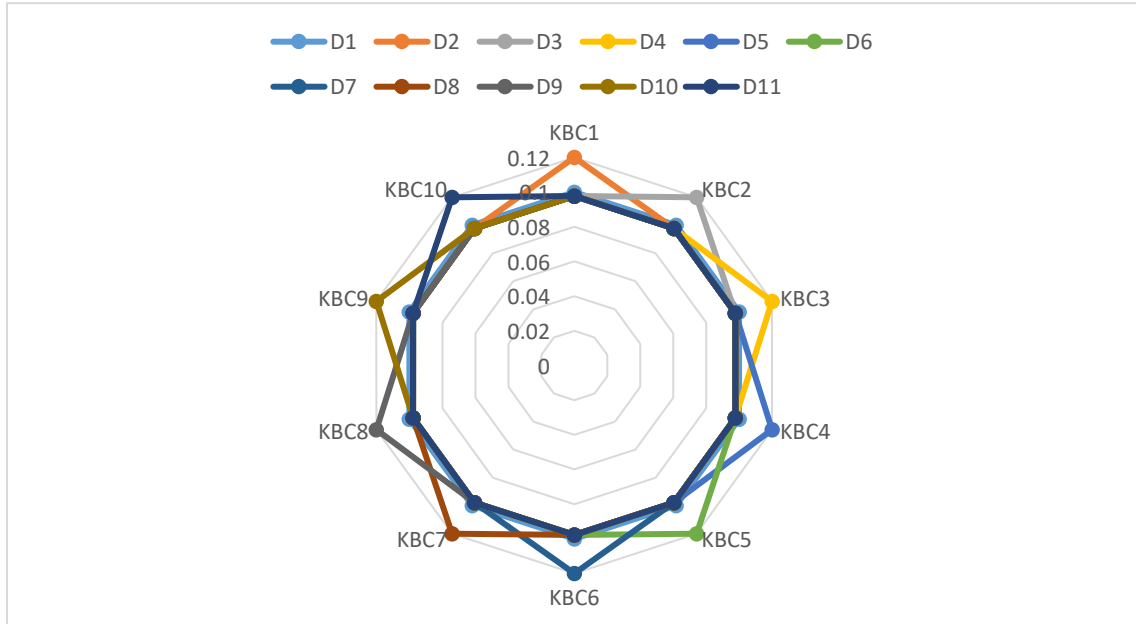


Fig. 5. The 11 cases in criteria weights.

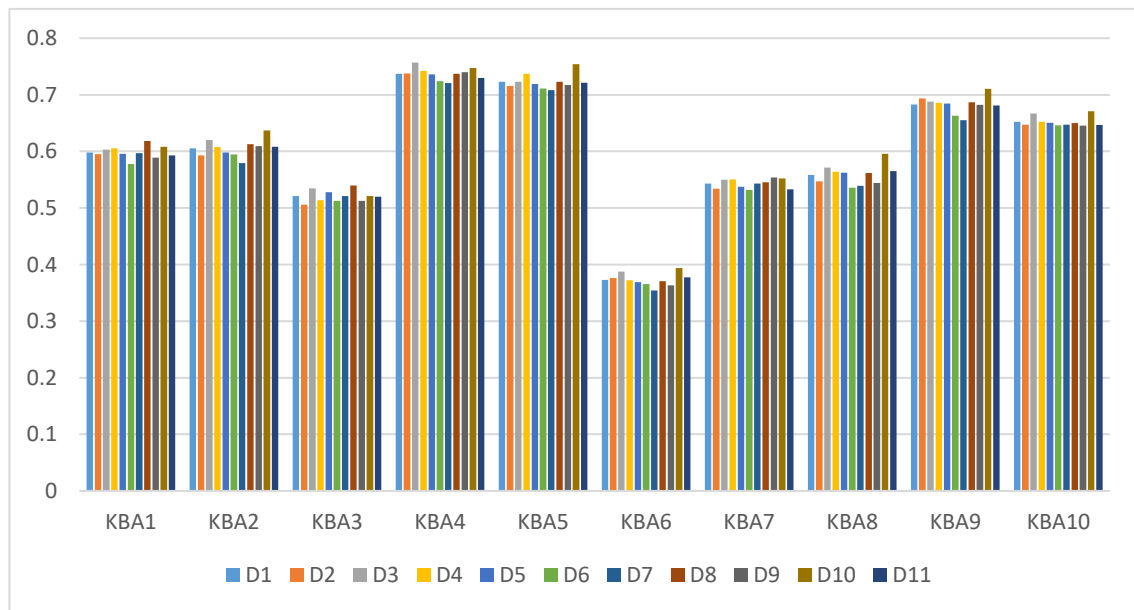


Fig. 6. The appraisal score under different cases.

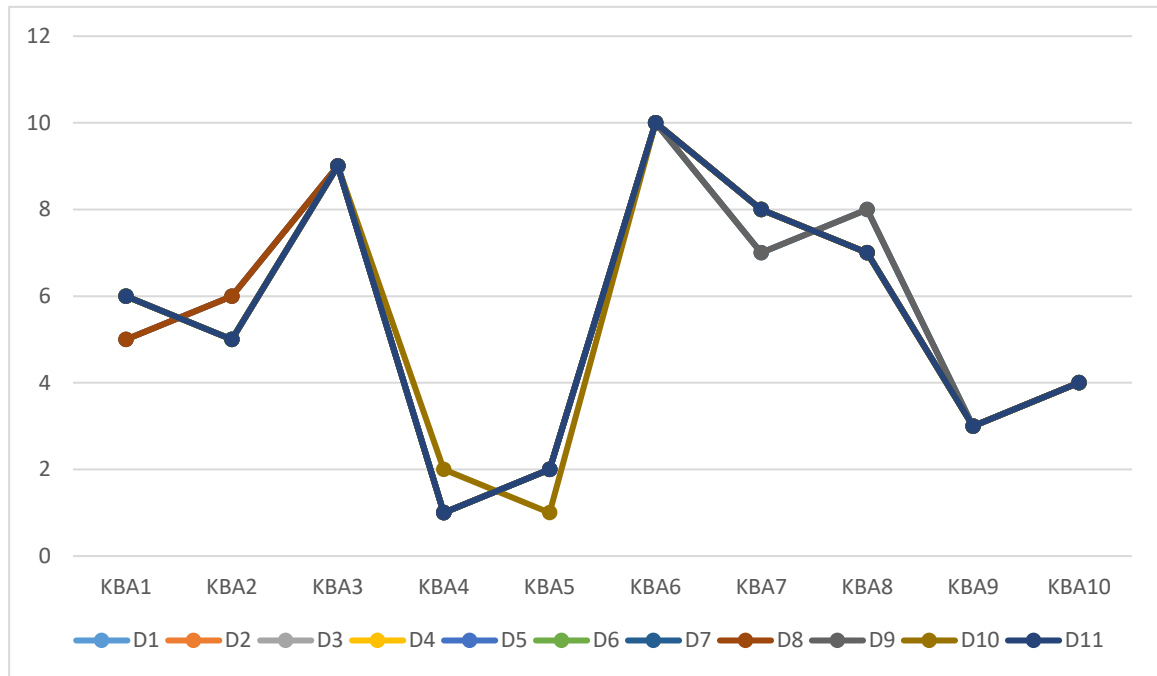


Fig. 7. The rank of alternatives under different cases.

5 | Conclusion

This study proposes a decision-making model for identifying key barriers when implementing cloud systems and AI in the IT industry. We proposed an MCDM method to rank the alternatives. The EDAS method is an MCDM method used to rank the options. Ten barriers and ten strategies are used in this study. The mean method is used to complete the criteria weights. The technological barrier has the highest weight. The EDAS method starts with the decision matrix between criteria and alternatives. Then, the positive and negative criteria are computed. Then, the weighted normalized positive and negative criteria are calculated by multiplying the criteria weights by the positive and negative criteria. The cost criterion is negative, and all other criteria are positive. The EDAS shows that alternative 4 is the best and alternative 6 is the worst. The sensitivity analysis is conducted to show the stability of the results. There are 11 cases proposed in this study. The first case has equal weights; in the other case, we put one criterion with 0.12 weight, and the equal criteria are equal. The results show the rank of alternatives under different cases is stable.

References

- [1] Alshahrani, R., Yenugula, M., Algethami, H., Alharbi, F., Goswami, S. S., Naveed, Q. N., ... & Zahmatkesh, S. (2024). Establishing the fuzzy integrated hybrid MCDM framework to identify the key barriers to implementing artificial intelligence-enabled sustainable cloud system in an IT industry. *Expert systems with applications*, 238, 121732. <https://doi.org/10.1016/j.eswa.2023.121732>
- [2] Sasikumar, A., Ravi, L., Kotecha, K., Saini, J. R., Varadarajan, V., & Subramaniaswamy, V. (2022). Sustainable smart industry: a secure and energy efficient consensus mechanism for artificial intelligence enabled industrial internet of things. *Computational intelligence and neuroscience*, 2022. DOI:10.1155/2022/1419360
- [3] Bag, S. (2020). *Big data analytics powered artificial intelligence to enhance sustainable manufacturing and circular economic capabilities* (Doctoral dissertation, University of Johannesburg (South Africa)). <https://www.proquest.com/openview/0cd9cba13c8a0339a408af68e95182c5/1?pq-origsite=gscholar&cbl=2026366&diss=y>

- [4] Kamoopuri, S. Z., & Sengar, A. (2023). Hi, may AI help you? An analysis of the barriers impeding the implementation and use of artificial intelligence-enabled virtual assistants in retail. *Journal of retailing and consumer services*, 72, 103258. DOI:10.1016/j.jretconser.2023.103258
- [5] Al-Besher, A., & Kumar, K. (2022). Use of artificial intelligence to enhance e-government services. *Measurement: sensors*, 24, 100484. DOI:10.1016/j.measen.2022.100484
- [6] Alahi, M. E. E., Sukkuea, A., Tina, F. W., Nag, A., Kurdthongmee, W., Suwannarat, K., & Mukhopadhyay, S. C. (2023). Integration of IoT-enabled technologies and artificial intelligence (AI) for smart city scenario: recent advancements and future trends. *Sensors*, 23(11), 5206. DOI:10.3390/s23115206
- [7] Więckowski, J., Kizielewicz, B., Shekhovtsov, A., & Sałabun, W. (2023). How do the criteria affect sustainable supplier evaluation? A case study using multi-criteria decision analysis methods in a fuzzy environment. *Journal of engineering management and systems engineering*, 2(1), 37–52. DOI:10.56578/jemse020102
- [8] Özaşkın, A., & Görener, A. (2023). An integrated multi-criteria decision-making approach for overcoming barriers to green supply chain management and prioritizing alternative solutions. *Supply chain analytics*, 3, 100027. DOI:10.1016/j.sca.2023.100027
- [9] Güneri, B., & Deveci, M. (2023). Evaluation of supplier selection in the defense industry using q-rung orthopair fuzzy set based EDAS approach. *Expert systems with applications*, 222, 119846. DOI:10.1016/j.eswa.2023.119846
- [10] Chen, X. (2023). An integrated fuzzy group decision-making model for construction enterprise contractor selection based on EDAS method and Information entropy. *Journal of intelligent & fuzzy systems*, 45(2), 3233–3245. <https://content.iospress.com/articles/journal-of-intelligent-and-fuzzy-systems/ifs231063>
- [11] Li, Q., Rong, Y., Pei, Z., & Ren, F. (2023). A novel linguistic decision making approach based on attribute correlation and EDAS method. *Soft computing*, 27(12), 7751–7771. DOI:10.1007/s00500-023-08079-y
- [12] Liao, N., Gao, H., Lin, R., Wei, G., & Chen, X. (2023). An extended EDAS approach based on cumulative prospect theory for multiple attributes group decision making with probabilistic hesitant fuzzy information. *Artificial intelligence review*, 56(4), 2971–3003. DOI:10.1007/s10462-022-10244-y
- [13] Akram, M., Ramzan, N., & Deveci, M. (2023). Linguistic Pythagorean fuzzy CRITIC-EDAS method for multiple-attribute group decision analysis. *Engineering applications of artificial intelligence*, 119, 105777. DOI:10.1016/j.engappai.2022.105777
- [14] Mallick, R., Pramanik, S., & Giri, B. C. (2023). Neutrosophic magdm based on critic-edas strategy using geometric aggregation operator. *Yugoslav journal of operations research*, 33(4), 683–698. DOI:10.2298/YJOR221017016M
- [15] Hosseini Dehshiri, S. S., & Firoozabadi, B. (2023). A new multi-criteria decision making approach based on wins in league to avoid rank reversal: a case study on prioritizing environmental deterioration strategies in arid urban areas. *Journal of cleaner production*, 383, 135438. DOI:10.1016/j.jclepro.2022.135438
- [16] Zeng, S., Chen, W., Gu, J., & Zhang, E. (2023). An integrated EDAS model for fermatean fuzzy multi-attribute group decision making and its application in green-supplier selection. *Systems*, 11(3), 162. DOI:10.3390/systems11030162
- [17] Torkayesh, A. E., Deveci, M., Karagoz, S., & Antucheviciene, J. (2023). A state-of-the-art survey of evaluation based on distance from average solution (EDAS): developments and applications. *Expert systems with applications*, 221, 119724. DOI:10.1016/j.eswa.2023.119724
- [18] Paul, T. K., Jana, C., & Pal, M. (2023). Multi-criteria group decision-making method in disposal of municipal solid waste based on cubic Pythagorean fuzzy EDAS approach with incomplete weight information. *Applied soft computing*, 144, 110515. DOI:10.1016/j.asoc.2023.110515